

HARRIS COUNTY FELONY PRETRIAL DETENTION REPORT

Brought to you by the Texas Center for Justice and Equity and researchers at Harvard University

June 26, 2022 - July 2, 2022



Lori Chambers Gray – 262nd District Court

Among current pretrial jail inmates assigned to Judge Chambers Gray:

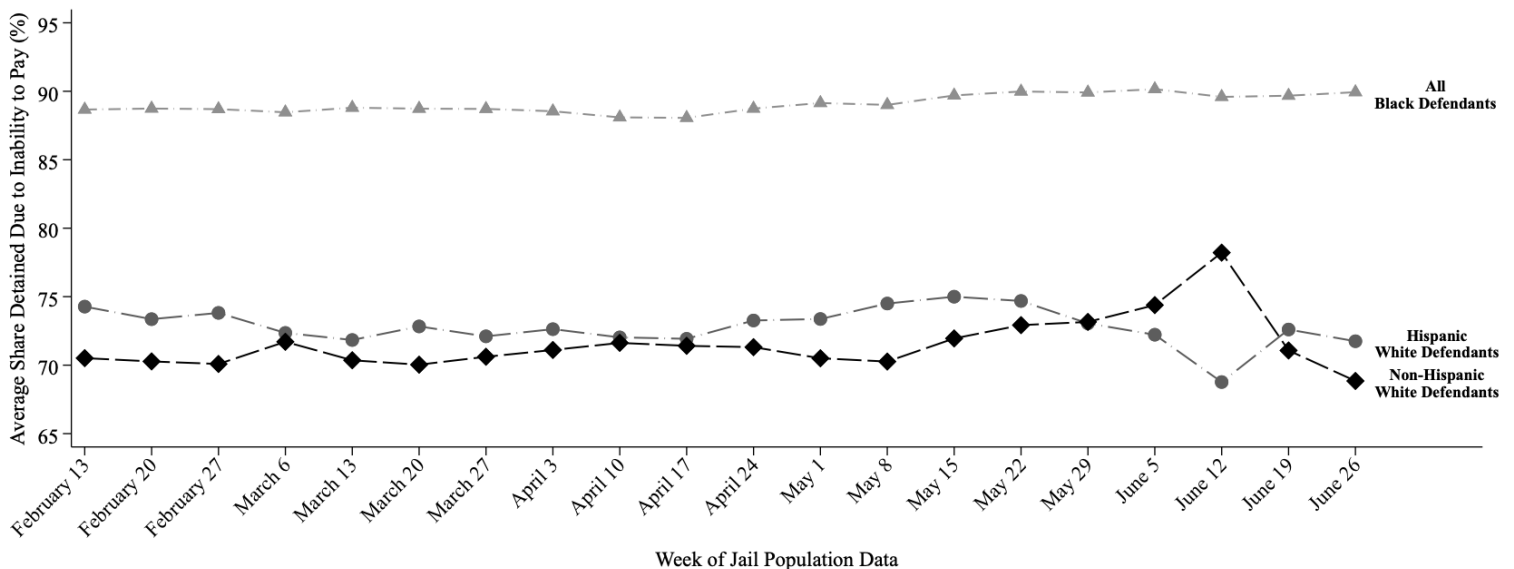
- **90% of Black defendants (220 out of 244)**
- **72% of Hispanic White defendants (60 out of 83)**
- **69% of non-Hispanic White defendants (90 out of 131)**

were detained per night based on inability to pay

Last week, among current pretrial jail inmates assigned to **Judge Chambers Gray**, **90% of Black defendants (220 out of 244 on an average night)**, **72% of Hispanic White defendants (60 out of 83 on an average night)**, and **69% of non-Hispanic White defendants (90 out of 131 on an average night)** were detained in Harris County Jail because they couldn't afford money bail.

Judge Chambers Gray's **racial difference in the share detained due to inability to pay for Black and Non-Hispanic White defendants** is among the **25% worst** in Harris County. Her **racial difference in the share detained due to inability to pay for Hispanic and Non-Hispanic White defendants** is among the **50% best** in Harris County.

Track Judge Chambers Gray's Share Detained Due to Inability to Pay



This report uses jail population data provided by Harris County. Share detained due to inability to pay represents the percent of current pretrial jail inmates assigned to this judge who were detained because they couldn't afford money bail.